

Mounts

Product Sheet



Designed to Optimize Load Cell Performance

FEATURES

Available for load cells ranging from in 5 KG to 60 T capacity

Material options: stainless steel or nickel-plated steel

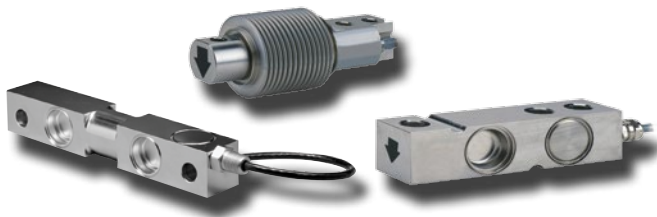
Mounting options: directly to floor or to structural support

Standard accessory types: T-end foot, ball in cup and rod end bearings

APPLICATIONS

Most industrial applications

SELECTION OF COMPATIBLE LOAD CELLS



Load Cell Compatibility Overview

As one of the market leaders for load cells, weigh modules and instruments, VPG Transducers offers a wide range of mountings designed to optimize the performance of its weighing sensors. The selection of a compatible mounting is a key factor to ensure the sensing device delivers the accuracy, repeatability, reliability and durability our customers expect. Our products are developed with the highest standards of performance and safety in mind, while providing the required support to the load cells and to the connecting load acting upon the load cell, for any installation.

Mounts	Compatible Load Cells
 1605 SSW	65016
 1625W	65016
 201028	3510, 3410
 201030	3510, 3410
 201034	3510, 3410
 201029	355
 201033	355
 201036	220

Mounts	Compatible Load Cells
 201076	Suitable for all M12 threaded load cells
 201029	355
 201222	355
 201227	3410, 3510
 201228	355
 201237	220
 201241	220
 201405	3510

At VPG Transducers, we understand that each application can be unique or special.

Please contact our in-house Custom Solutions team to engage our services towards meeting your specific requirements:

vpgt.customsolutions@vpgsensors.com

DISCLAIMER: ALL PRODUCTS, PRODUCT SPECIFICATIONS AND DATA ARE SUBJECT TO CHANGE WITHOUT NOTICE. Vishay Precision Group, Inc., its affiliates, agents, and employees, and all persons acting on its or their behalf (collectively, "VPG"), disclaim any and all liability for any errors, inaccuracies or incompleteness contained herein or in any other disclosure relating to any product. The product specifications do not expand or otherwise modify VPG's terms and conditions of purchase, including but not limited to, the warranty expressed therein. VPG makes no warranty, representation or guarantee other than as set forth in the terms and conditions of purchase. **To the maximum extent permitted by applicable law, VPG disclaims (i) any and all liability arising out of the application or use of any product, (ii) any and all liability, including without limitation special, consequential or incidental damages, and (iii) any and all implied warranties, including warranties of fitness for particular purpose, non-infringement and merchantability.** Information provided in datasheets and/or specifications may vary from actual results in different applications and performance may vary over time. Statements regarding the suitability of products for certain types of applications are based on VPG's knowledge of typical requirements that are often placed on VPG products. It is the customer's responsibility to validate that a particular product with the properties described in the product specification is suitable for use in a particular application. You should ensure you have the current version of the relevant information by contacting VPG prior to performing installation or use of the product, such as on our website at vpgsensors.com. No license, express, implied, or otherwise, to any intellectual property rights is granted by this document, or by any conduct of VPG. The products shown herein are not designed for use in life-saving or life-sustaining applications unless otherwise expressly indicated. Customers using or selling VPG products not expressly indicated for use in such applications do so entirely at their own risk and agree to fully indemnify VPG for any damages arising or resulting from such use or sale. Please contact authorized VPG personnel to obtain written terms and conditions regarding products designed for such applications. Product names and markings noted herein may be trademarks of their respective owners.